



Difficulty:
Moderate to Difficult



Estimated installation time:
about 5-7 hours for someone with
experience in working with vehicles

KIT INCLUDES

1x IHI Turbocharger.

1x Wastegate.

1x MAP- Sensor

3x Injectors

1x VICTORY Mount from engine to
turbo and exhaust.

1x Exhaust neck flange with gasket and k-nuts.

1x Exhaust for OEM Silencer.

1x VICTORY Silicone hose kit.

1x Inter pipe for Intercooler -> Turbo.

1x Inter pipe for Throttle body -> Intercooler.

2x Acrylic sheets for intercooler and
engine power supply components.

1x Air Filter Tube with engine top
breather connector

1x VICTORY 4" Stainless Air Filter
with water resistant hat

1x Joint for oil inlet.

1x Stand for water coolant tank

1x Reinforced silicone hose kit for water

9x M8 Studs and k-nuts for exhaust manifold

1x Permatex Supra Copper High Temp Silicone

1x Plug for AFR- Sensor

Straps

Stainless clamps in various sizes

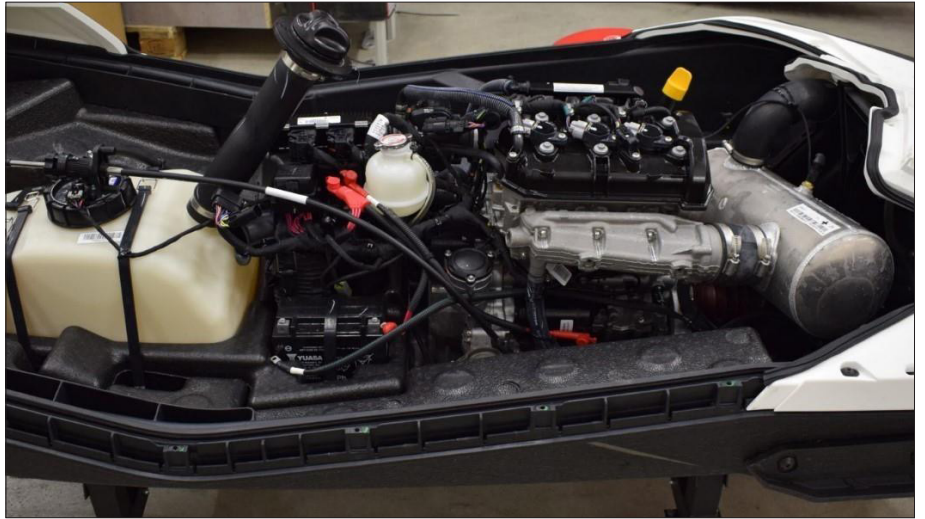
Stainless screws and nuts.

OPTIONAL:

MaptunerX Tuning Bundle for
Sea-Doo Spark Turbo Kit (sold separately)

STEP 1

Remove top deck from watercraft.



STEP 2

Remove waterbox and remove hoses from exhaust manifold.



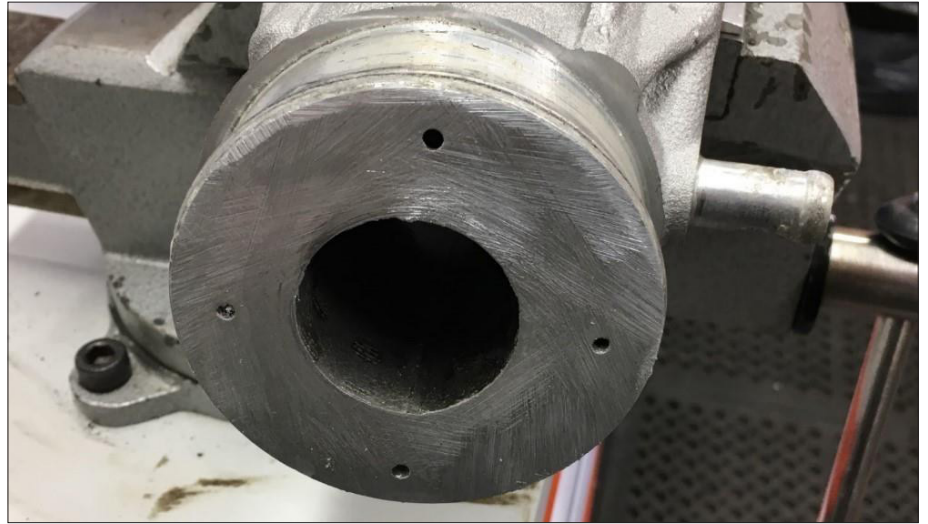
STEP 3

Remove exhaust manifold and cut off pipe that goes to water box.



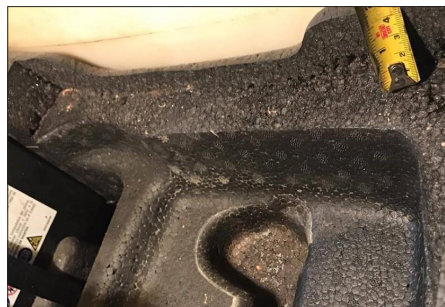
STEP 4

Grind until you have a flat surface.



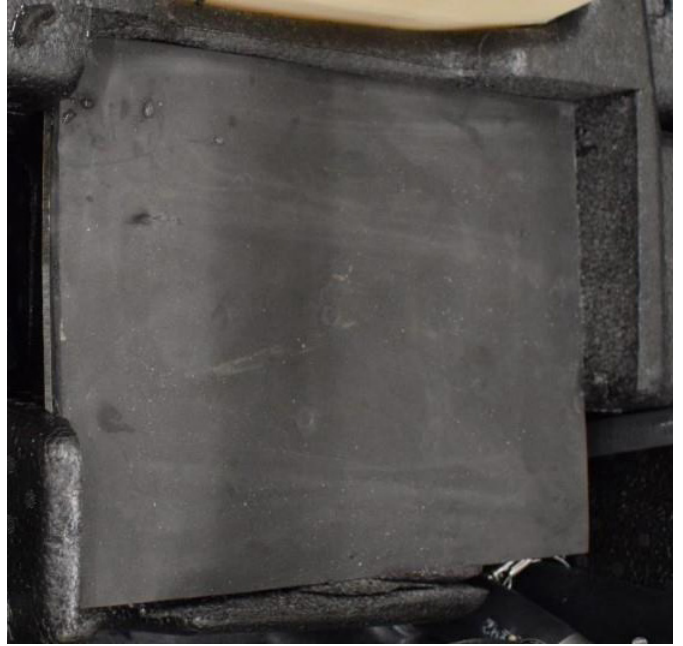
STEP 5

Remove Air Filter Box and cut out the foam to make place for acrylic sheet and intercooler.



STEP 6

Put acrylic sheet with soft side up in place.



STEP 7

Install intercooler .



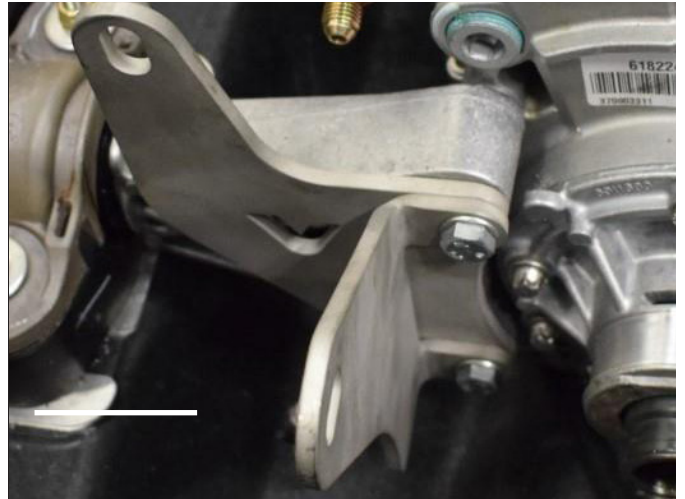
STEP 8

Install water cooler stand.



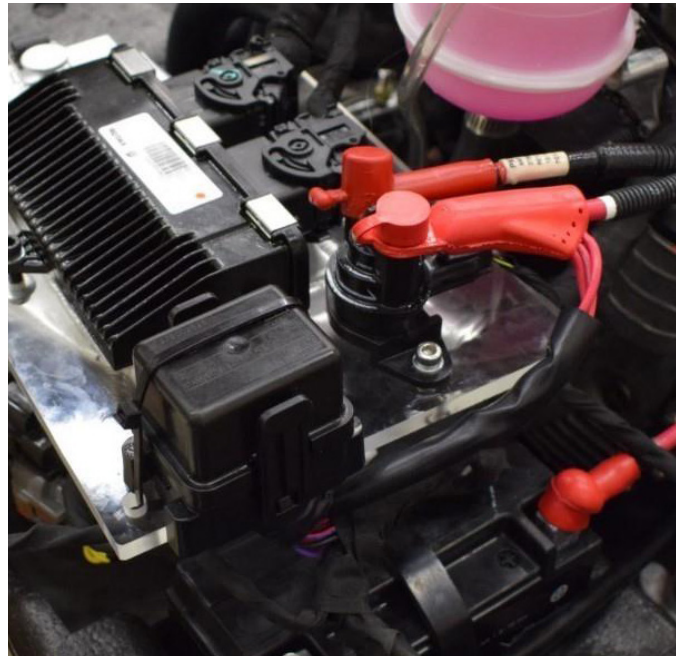
STEP 9

Install VICTORY mount on engine with screws from exhaust manifold.



STEP 10

Mount electrical components on top of intercooler on acrylic sheet.



STEP 11

Install inter pipe from throttle body to intercooler.



STEP 15

Mark a place like picture below.



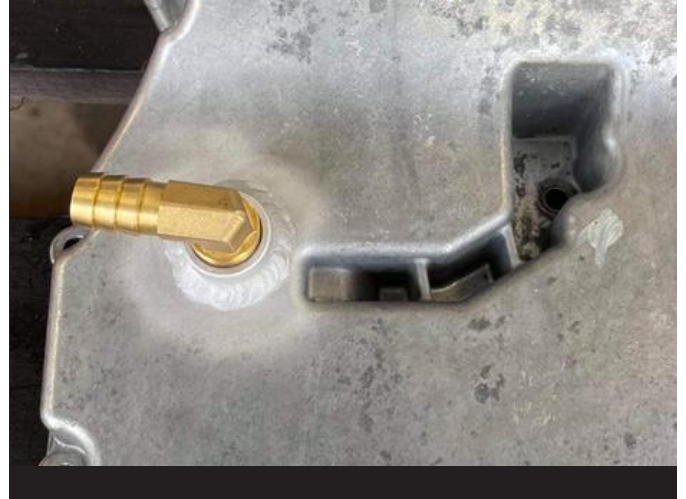
STEP 16

Weld welding connection to oil tank on flat surface.



STEP 17

Install 45 degree connector.



STEP 18

Install exhaust manifold using Studs and k-nuts provided in kit. Put SUPRA COPPER in four water outlets OPTIONAL: Weld it.



STEP 19

Put SUPRA COPPER on exhaust neck flange before installing it on exhaust manifold.



STEP 20

Install turbo and exhaust. Make sure there is enough space between exhaust and resonance box. There should be no contact between them except for the silicone hose.

STEP 21

Exhaust Gas Temp Sensor will not be used with VICTORY Sea-Doo Spark Turbo Kit. Connect sensor to connector and attach it to engine harness using ties provided in kit.

STEP 22

Check all connectors, including lambda screw, before starting ski for first time after installation.

STEP 23

Exhaust Gas Temp Sensor will not be used with VICTORY Sea-Doo Spark Turbo Kit. Connect sensor to connector and attach it to engine harness using ties provided in kit.

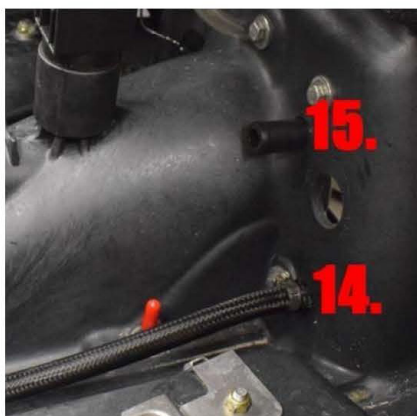
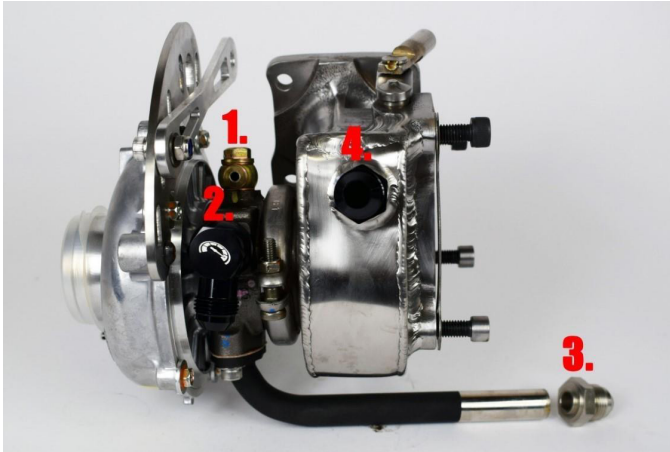
HOSE DRAWING

15-12 (OEM Hose) approx.. 20cm from transom of ski install T-CROSS.

12 – T-CROSS – 11-10- Y-CONNECTOR- 8 / 4.

14-Y-CONNECTOR (OEM HOSE) – 5 / 2 13-6

1 - Oil inlet on engine using steel braided hose provided in kit.



TECHNICAL SPECIFICATION

Target RPM: 8700-8900

Boost with stock piston: 0.50-0.70

Boost with high compression piston: 0.80 and above

IMPORTANT!

Installing the wrong tune for your performance package may lead to poor performance and/or engine damage.

Maptun Powersports VTECHTUNED is not responsible for any substitution in parts or other modifications that lead to poor performance or engine damage.

After first start-up you need to check oil level and make sure it's in between max and low mark.

After installation of VICTORY Spark Turbo Kit, make sure ski is parked level parallel otherwise engine oil may go backwards and harm turbo parts.

If you have any questions, please contact info@maptun.com

Map Tun
powersports
VTECHTUNED

MAPTUN PERFORMANCE AB

+46 19 23 70 30

INFO@MAPTUN.COM

WWW.MAPTUN.COM