

# MAPTUNER X

Performance under control.



---

## BRP Quick Start Guide

### Parts Required

- **VTECHTUNED Maptuner X [01-MTX-VTECH]**  
Hand-held unit with full color and touch screen display makes it easy to load performance tunes into your vehicle.
- **Micro USB Cable [01-MT015]**  
For connection from Maptuner X to computer system.
- **Maptuner X BRP Cable [01-mt013/2]**  
Programming cable for all BRP- vehicles.  
Connect Maptuner X directly to vehicles OBD communication port.
- **VTECHTUNED Tuning License**  
Purchase 1x Tuning License for each BRP vehicle that you want to tune.  
This license gives you complete access to tuning library.  
Switch between performance tunes and then back to stock if you wish.  
NOTE! There are two different license types,  
Spark License – For natural aspirated vehicles. **[01-MT.LIC]**  
Standard License – For supercharged vehicles. **[01-MT.LIC.2]**

# Step 1

Download and install latest MyMaptuner PC Program.

<https://maptuner.se/download/Default.aspx>



**Map Tun**  
performance

**DOWNLOAD CENTER**

**MYMAPTUNER SOFTWARE**

Windows **32 bit** Operating System

**File:** MyMaptuner\_32bit\_2.3.79\_Setup.exe  
**Version:** 2.3.79  
**Date:** 2017-08-02  
**Size:** 29.8 Mb

**DOWNLOAD** [Help me choose 32bit or 64bit](#)

For MaptunerX and Maptuner 1 devices.  
Enables download and installation of new tunes and system diagnostics.

# Step 2

Open MyMaptuner and click on “New User...”

Enter you email, full name and software code that you received when you purchased your tuning license.



My Maptuner - login

User name:  [Forgot my password...](#)

Password:

**Map Tun**  
performance

Remember me [Questions/problems?](#)

[New user...](#)

MyMaptuner v2.3.79.40312

New User

If you do not have a user account in the Maptuner system you may create it here;  
To proceed, you must specify:  
-Your email address (your password will be mailed to this address)  
-Your name  
-A valid, not used and not user assigned license code

Email:

Full name:

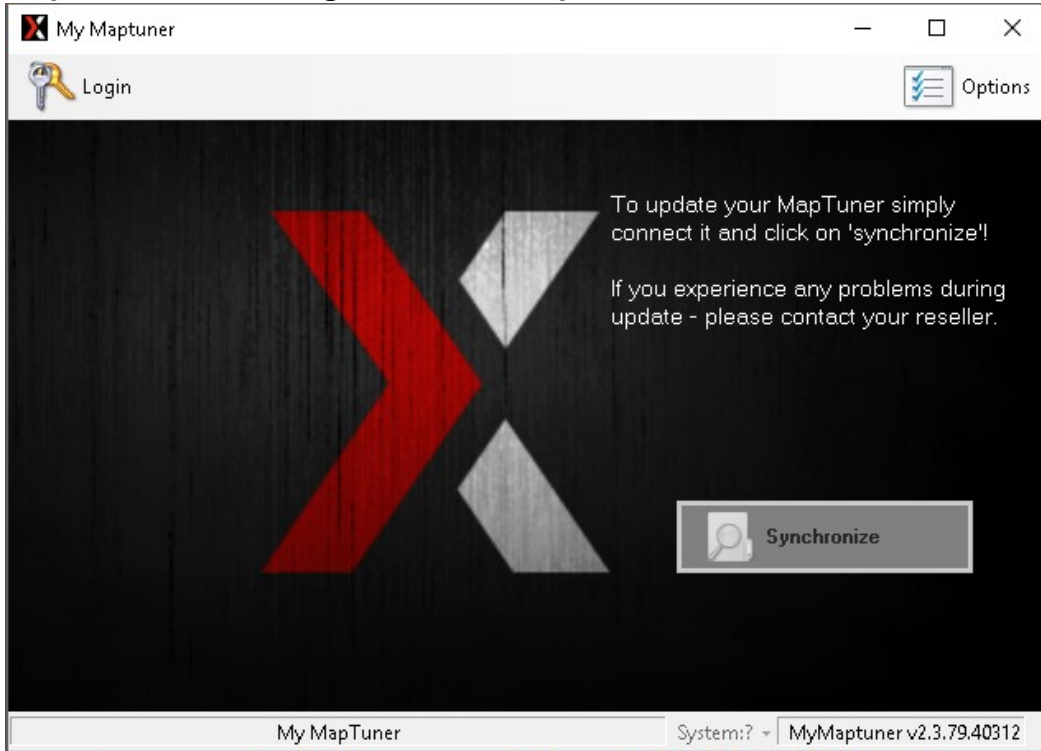
License code:

*A license code looks like XXXXXXXXXXXXXXXXXXXXXXX*

Your login details will be emailed to you upon completion of the form.

## Step 3

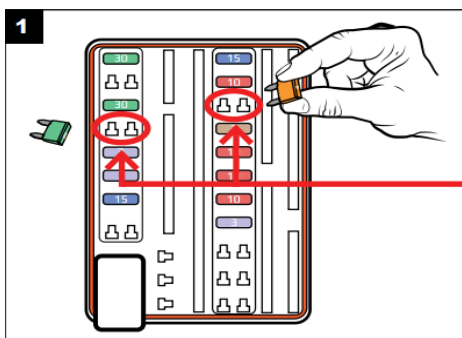
Plug Maptuner X in to your computer and click on “Synchronize” button. Maptuner X will now go online and update to the latest firmware.



## Step 4

**- IMPORTANT WHEN TUNING 300 HP SEA-DOO MODELS.**

When programming to the ECU of 300HP models its very important that you remove the fuses for the IBR and IBR monitor systems or else the programming might need to recover the ECU. (fig.1)



*Remove the marked fuses during programming. Remember to reconnect them after flashing is complete. See (Fig. 2 - 7 for location)*

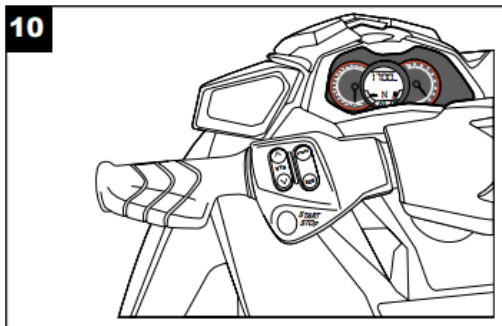
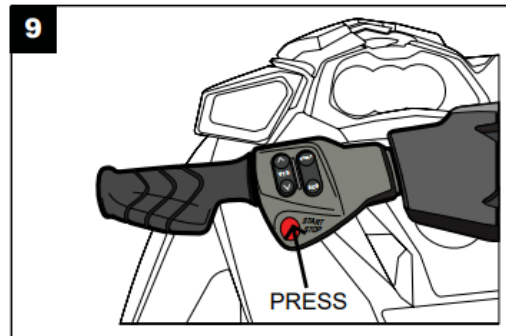
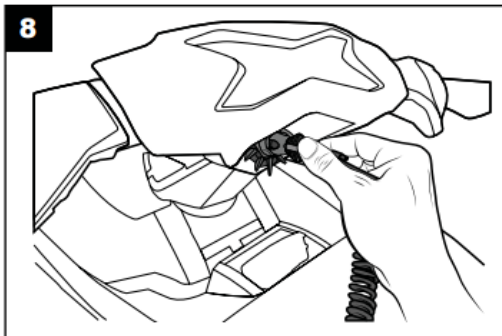
## Step 5

Unplug Maptuner X from computer and plug the Maptuner X in to the OBD connector on your vehicle.

## Step 6

When connected, power your vehicle by:

1. Insert the DESS key/lanyard (Fig.8)
2. Press **RED** start/stop button on handlebar switch (Fig.9)
3. Be sure the gauge cluster is ON (Fig.10)



## Step 7

Now press Add Vehicle button.



Your vehicle will now be identified and stored on the Maptuner X in

APP “My Vehicles”

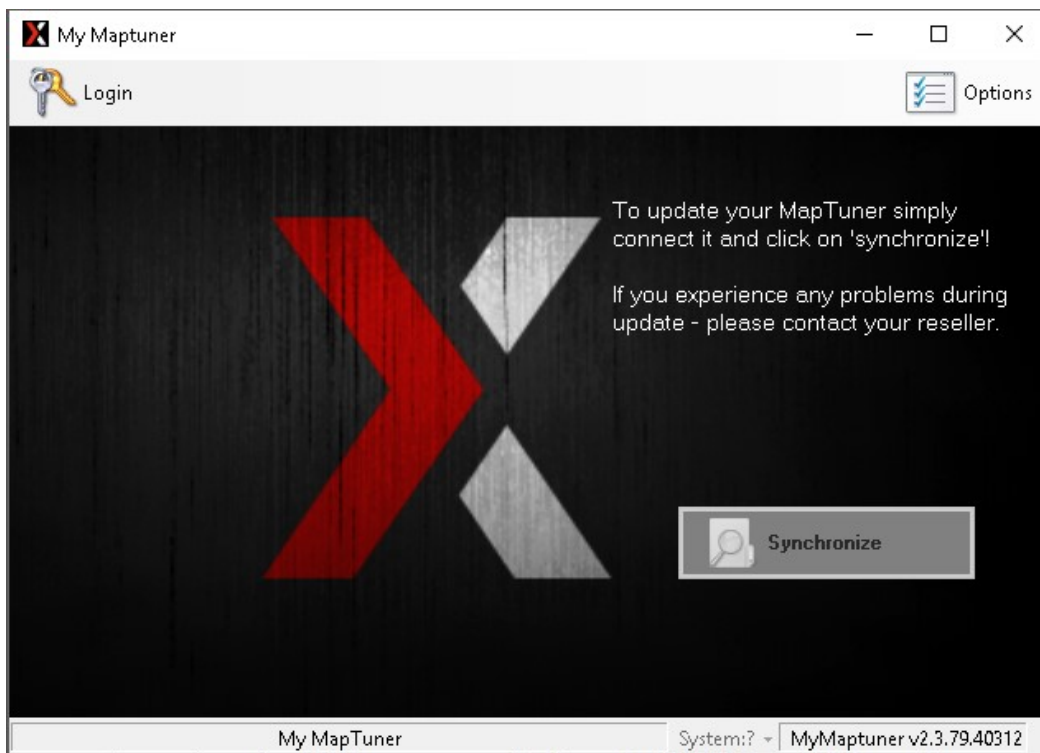


After vehicle is loaded, disconnect Maptuner X from vehicle.

## Step 8

Plug Maptuner X in to your computer using the USB- cable and click the synchronize button.

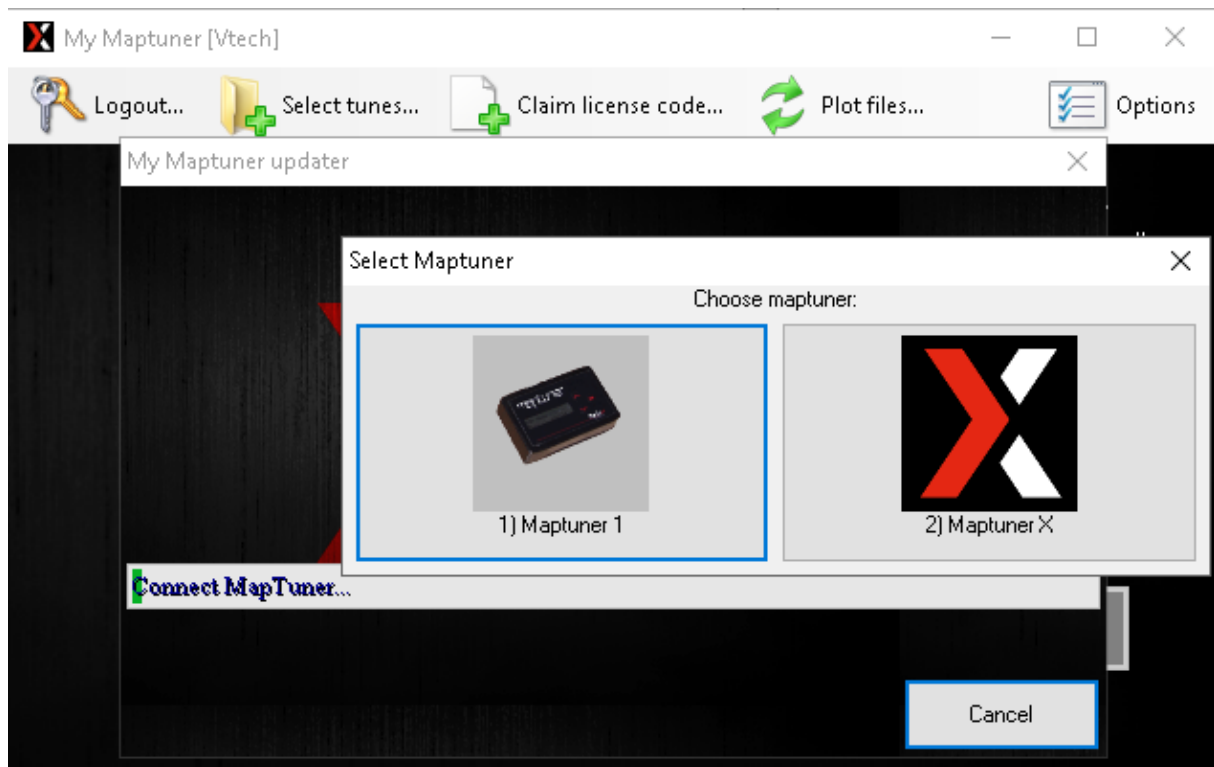
Maptuner X will now go online and update firmware.



## Step 9

You will now need to choose your device, select Maptuner X.

Your screen should look like this:



## Step 10

Now you will be able to select tunes from our tuning library.

If you are a first-time user and you have created an account with your license code, your license code will be stored and ready for use as soon as you select any software.

Once you have tunes selected you need to synchronize again for download.

Tuning license can be bought from -  
<https://www.maptunpowersports.com/licenses>

## Step 11

Disconnect Maptuner X from computer.

## Step 12

Press My Vehicles  to confirm that your vehicles VIN is active.

## Step 13

Press the programming APP  on Maptuner X display.

## Step 14

Select the tune you want to flash to the ECU and press “Next”.

Make sure you have all necessary parts for the tune.

### **IMPORTANT!**

Installing the wrong tune for your hardware setup may lead to poor performance and/or engine damage.

Maptun Powersports VTECHTUNED is not responsible for any substitution in parts or other modification that lead to poor performance or engine damage.

## Step 15

### **FOR SEA-DOO 300HP MODELS ONLY:**

Once programming is finished, replace the fuses that you removed at the beginning of the flashing process.

## Step 16

You now need to remove error code from the vehicle.

Press service APP  to enter your service APPs.

## Step 17

Press the fault codes APP  to read and clear error codes.

**The tuning process is now complete!**

---

Thank you for choosing us as your tuning supplier.



For sales and support questions, please contact:

[info@maptun.com](mailto:info@maptun.com)

+46 (0) 19 – 23 70 30



