

# MAPTUNER X

Performance under control.



---

## Yamaha Quick Start Guide

### Parts Required

- **VTECHTUNED Maptuner X [01-MTX-VTECH]**  
Hand-held unit with full color and touch screen display makes it easy to load performance tunes into your vehicle.
- **Micro USB Cable [01-MT015]**  
For connection from Maptuner X to computer system.
- **Maptuner X Yamaha Cable**  
Programming cable for Yamaha vehicles.  
Connect Maptuner X directly to vehicles OBD communication port.
- **VTECHTUNED Tuning License**  
Purchase 1x Tuning License for each BRP vehicle that you want to tune.  
This license gives you complete access to tuning library.  
Switch between performance tunes and then back to stock if you wish.  
NOTE! There are two different license types,  
Spark License – For natural aspirated vehicles. **[01-MT.LIC]**  
Standard License – For supercharged vehicles. **[01-MT.LIC.2]**

# Step 1

Download and install latest MyMaptuner PC Program.

<https://maptuner.se/download/Default.aspx>



**Map Tun**  
performance

**DOWNLOAD CENTER**

**MYMAPTUNER SOFTWARE**

Windows **32 bit** Operating System

**File:** MyMaptuner\_32bit\_2.3.79\_Setup.exe  
**Version:** 2.3.79  
**Date:** 2017-08-02  
**Size:** 29.8 Mb

**DOWNLOAD** [Help me choose 32bit or 64bit](#)

For MaptunerX and Maptuner 1 devices.  
Enables download and installation of new tunes and system diagnostics.

# Step 2

Open MyMaptuner and click on “New User...”

Enter you email, full name and software code that you received when you purchased your tuning license.



My Maptuner - login

User name:  [Forgot my password...](#)

Password:

**Map Tun**  
performance

Remember me [Questions/problems?](#)

[New user...](#)

MyMaptuner v2.3.79.40312

New User

If you do not have a user account in the Maptuner system you may create it here;  
To proceed, you must specify:  
-Your email address (your password will be mailed to this address)  
-Your name  
-A valid, not used and not user assigned license code

Email:

Full name:

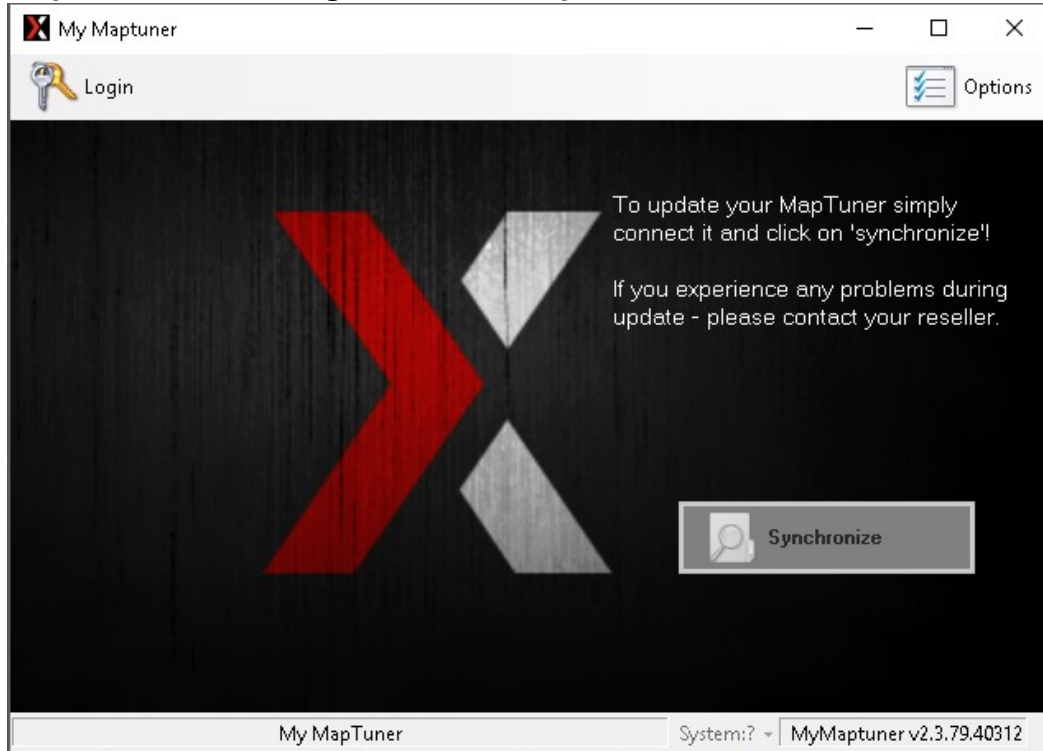
License code:

*A license code looks like XXXXXXXXXXXXXXXXXXXXXXX*

Your login details will be emailed to you upon completion of the form.

## Step 3

Plug Maptuner X in to your computer and click on “Synchronize” button. Maptuner X will now go online and update to the latest firmware.



Unplug Maptuner X from computer

## Step 4

Remove the seat of your vehicle and locate the electrical box & battery compartments.

## Step 5

1. Unplug ALL original ECU connectors.
2. Plug the Maptuner X in to the middle ECU connector.
3. Connect power cable clamps from the Maptuner X Kawasaki cable to battery terminals.

## Step 6

Now press Add Vehicle 

Your vehicle will now be identified and stored on the Maptuner X in

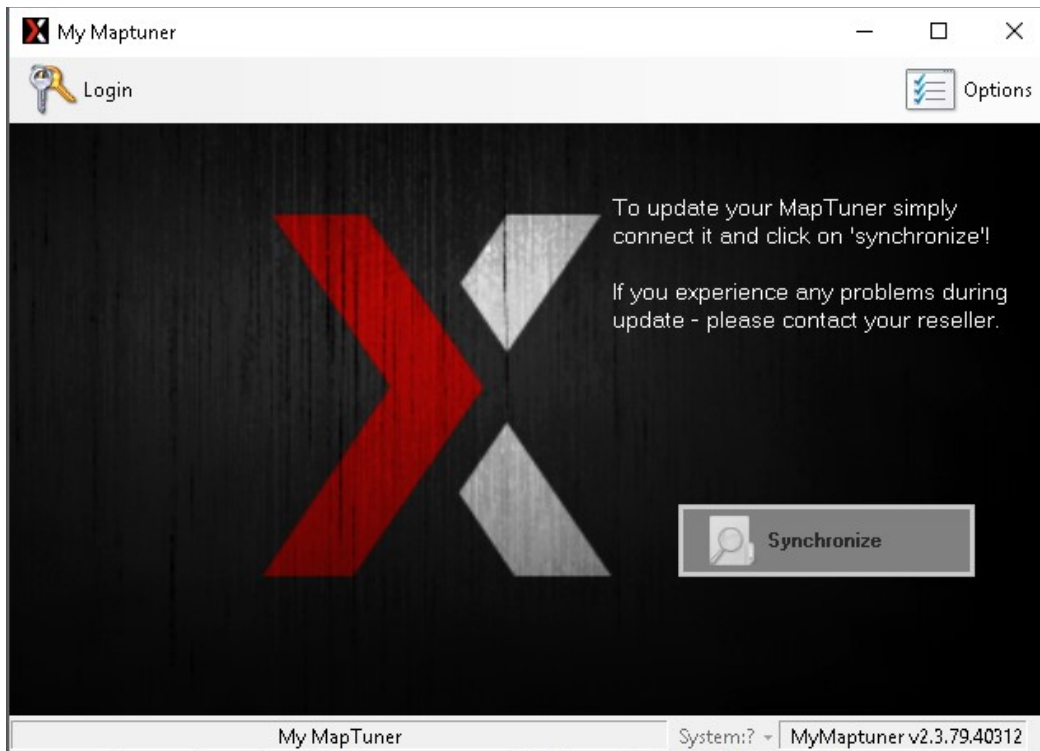
APP “My Vehicles” 

After vehicle is loaded, disconnect Maptuner X from vehicle.

## Step 7

Plug Maptuner X in to your computer using the USB- cable and click the synchronize button.

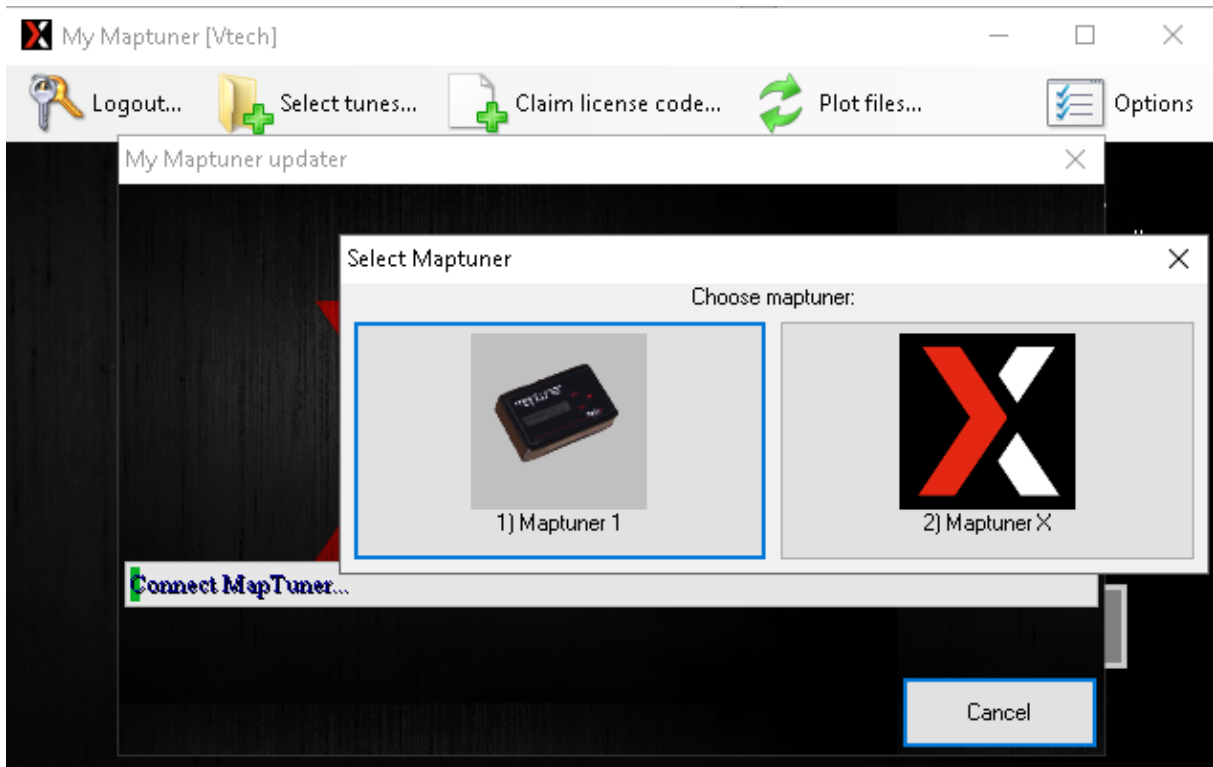
Maptuner X will now go online and update firmware.



## Step 9

You will now need to choose your device, select Maptuner X.

Your screen should look like this:



## Step 10

Now you will be able to select tunes from our tuning library.

If you are a first-time user and you have created an account with your license code, your license code will be stored and ready for use as soon as you select any software.

Once you have tunes selected you need to synchronize again for download.

Tuning license can be bought from -  
<https://www.maptunpowersports.com/licenses>

## Step 11

Disconnect Maptuner X from computer.

## Step 12

Press My Vehicles  to confirm that your vehicle VIN is active.

## Step 13

Press the programming APP  on Maptuner X display.

## Step 14

Select the tune you want to flash to the ECU and press “Next”.

Make sure you have all necessary parts for the tune.

### **IMPORTANT!**

Installing the wrong tune for your hardware setup may lead to poor performance and/or engine damage.

Maptun Powersports VTECHTUNED is not responsible for any substitution in parts or other modification that lead to poor performance or engine damage.

## Step 15

Once flashing is finished, disconnect Maptuner X from vehicle and reconnect all original ECU and battery connectors. Replace electrical box cover and test start engine.

**The tuning process is now complete!**

---

Thank you for choosing us as your tuning supplier.



For sales and support questions, please contact:

[info@maptun.com](mailto:info@maptun.com)

+46 (0) 19 – 23 70 30